

41 LOWERY DRIVE

A T H E R T O N



Steeped in Atherton's aristocratic history, this Greek and Georgian Revival mansion was built in 1904 for a grandniece of Mark Hopkins. The design was commissioned from San Francisco architects Bliss and Faville, whose distinguished body of work includes the St. Francis Hotel, the Flood Mansion, the Bank of California, and many buildings of the Pan Pacific Exposition. Today, the magnificent home has been completely re-envisioned with contemporary function and livability in mind. The meticulous renovation, spearheaded by the restoration firm of Atherton Heritage, LLC, utilized the finest materials and artisans from all over the world to restore and rebuild the home. Lavish period details, including classical colonnades, ornate plaster reliefs, and four spectacular fireplaces, have been lovingly restored and recreated to recapture their original glory.

The main level supports truly grand entertaining, with a striking portico reception terrace, dramatic ballroom foyer, and a living room that recalls the opulent lifestyles of the early 1900s. The family room and large-scale kitchen, designed by Dan Phipps, caters gourmet meals for gala affairs or relaxed family gatherings. Arranged over four levels, the seven bedrooms, four bathrooms, and three half-baths are highlighted by a sumptuous master bedroom suite with a Carrera marble bath. Important new features include the entire physical infrastructure, "smart-house" wiring, a cinema-quality screening room, a wine cellar, and a detached three-car garage. Over an acre of lush period-accurate landscaping and a stunning new pool and spa have been designed by the noted landscape architects Suzman and Cole. The mansion is located in Oak Grove Estates.

Selected for the April 2005 Coyote Point Museum Auxiliary Decorators' Show House.

Price: \$10,950,000

SUSAN TILLING | 650.566.5313 DIRECT | 650.324.4456 OFFICE | stiling@cbtnorcal.com



SUMMARY OF THE HOME

GENERAL

- 7 bedrooms, 4 bathrooms, and 3 half-baths
- Historic mansion in prestigious Oak Grove Estates
- Classic Georgian and Greek Revival architecture
- Originally built in 1904 and extensively restored and updated in 2005
- Detached 3-car garage
- Professionally landscaped grounds with historically accurate plantings
- Pool and spa
- Lot size: approximately 1.21 acres
- Local schools: Laurel, Encinal, Hillview, and Menlo-Atherton
- Selected for the April 2005 Coyote Point Museum Auxiliary Decorators' Show House

MAIN LEVEL

- Magnificent portico reception terrace
- Impressive ballroom foyer with sweeping staircase
- Powder room
- Majestic living room with handcarved fireplace
- Expansive formal dining room with limestone fireplace
- Dan Phipps-designed kitchen with day office and wet bar
- Family room opens to the rear gardens
- Elegant breakfast room with adjoining luncheon terrace

SECOND LEVEL

- Grand gallery hall
- Fabulous master bedroom suite with fireplace, luxurious bath, and two walk-in closets
- Terrace Bedroom and East Bedroom with shared bath
- Library (or 7th bedroom) with fireplace and en suite full bath

THIRD LEVEL

- Large game room with half-bath
- Study or exercise alcove
- Three bedrooms with shared "heritage" bath
- Trunk room

LOWER LEVEL

- Cinema-quality screening room
- Customized wine cellar
- Charming half-bath



DETAILS OF THIS FINE RESIDENCE
MAIN LEVEL OF THE HOME

ENTRANCE

- Period-appropriate steel gates open to an elliptical motor court of crushed gravel bordered by seas of level lawn; a matched pair of regal Canary palm trees reinforces the classic symmetry of the home's opulent architecture
- Ornamenting the Georgian façade is a magnificent Greek Revival portico with regiments of columns supporting an elaborately detailed cornice; the expansive reception terrace is adorned with an ornate 12-foot coffered ceiling and Italian honed marble flooring; a wall of French doors opens to the ballroom foyer, anchored by elegant steel and glass French doors worthy of an Embassy

BALLROOM FOYER

- Stately columns parade across white oak flooring and support a coffered plaster ceiling; original pocket doors of two-inch-thick hardwood open to the living room and dining room; a sweeping staircase with hand-crafted banister and balustrades is highlighted by a leaded-glass window original to the home

POWDER ROOM 1

- Venetian plaster-finished walls and hand-painted faux-mosaic flooring are complemented by a console sink with black Portorio marble top

LIVING ROOM

- The grand dimensions of this breathtaking space are enhanced by generous crown molding and a vast sweep of hardwood flooring; the 12.5-foot ceiling is accented by an ornate plaster-relief meticulously recreated to the original design by museum-experienced artisans; four sets of French doors frame garden views on three sides; completing this extraordinary room is the original fireplace, baronial in scale and featuring an intricately hand-carved mantelpiece and an Italian marble hearth

DINING ROOM

- The rich appointments in this banquet-scale room include white oak flooring, wood-paneled walls with dentil trim, and an eye-catching high beamed ceiling with gold-leaf-like detailing; the notable original limestone fireplace surround is ornamented with hand-carved garlands of fruit and flowers

KITCHEN

- This chef's domain is equipped to cater entertaining on a grand scale as well as creating a warm and welcoming environment for everyday living; the high ceiling accommodates two tall, double-hung original windows overlooking the kitchen garden; finished with quality cabinetry and Carrera marble, the abundant storage and work areas include a convenient day desk, a generous center island, and a long peninsula adjoining the family room; parquet hardwood flooring unifies the kitchen, family room, and breakfast room; a caterer's door provides easy access for deliveries and service to the pool terrace; appliances include a Viking 48-inch 6-burner gas range, 2 Viking convection/thermal ovens, Thermador thermal/microwave combination oven, Sub-Zero 48-inch refrigerator/freezer, 2 paneled GE refrigerator drawers, 2 Miele dishwashers, built-in Miele coffeemaker, 2 Marvel wine coolers, and 2 sinks with KitchenAid disposals



FAMILY ROOM

- Imposing columns define the inviting family room and provide an architectural link to the formal spaces; bay windows and French doors lead to the kitchen garden and the pool and spa beyond

BREAKFAST ROOM AND PORTE COCHERE TERRACE

- The scale and proportion of this versatile-use room affords truly elegant entertaining; a handsomely paneled door opens to the original Greek Revival-style columned porte cochere, which has been transformed into a stylish neo-classical elevated luncheon terrace with Italian marble flooring, ideal for al fresco dining

SECOND LEVEL OF THE HOME

UPPER GALLERY

- This spacious gallery echoes the columned grandeur of the ballroom foyer below with exquisite white oak flooring, a parade of pilasters, and a coffered ceiling

MASTER BEDROOM SUITE

- Two original double-hung windows provide generous illumination; accentuating the sense of volume is an 11-foot high coved ceiling; the crown jewel of the room is a period, fired terracotta porcelain fireplace with Carrera marble facing; deep trim details and recessed lighting provide finishing touches
- Separate walk-in closets for the lady and gentleman of the household reflect the refined sophistication of a more genteel era; each closet includes a window for natural light
- This distinctive bath is highlighted by a dual-sink vanity customized from a unique dressing table and finished with a honey-onyx top; two tall windows overlook the gardens; the Carrera marble-finished appointments include a bubbling tub and a shower for two with a seating bench, rain bar, and handheld showerhead

BEDROOM 2 – “THE TERRACE ROOM”

- This light-filled sanctuary is crowned by a high coved ceiling with recessed lighting; French doors open to a terrace overlooking the main gate and the twin palms that grace the spectacular approach to the residence

BEDROOM 3 – “THE EAST ROOM”

- Two tall double-hung windows, original to the residence, a high coved ceiling, and wall sconces imbue this personal retreat with light and a sense of serenity



BATHROOM 2

- This chic shared bath serves bedrooms 2 and 3; finished with dove-gray tile and reproduction appointments true to the home's genteel past, the amenities include a vanity with a marble top, and flooring of octagonal marble tile

BEDROOM 4 SUITE - "THE LIBRARY"

- Reminiscent of a private club, this sanctuary is ideal for use as a den or library; warming the space is a wood-burning fireplace with gas starter; the rich appointments include hardwood flooring with an inlaid mahogany feature strip and corner details, faux-leather-finished walls, picture rail molding, and a window overlooking the sculpture garden
- Finished with striking black marble flooring and vintage tile, this bathroom includes a vanity, tub/shower, and walk-in closet

THIRD LEVEL OF THE HOME

GAME ROOM

- Faux-finished plaster walls establish the warm and inviting atmosphere of this versatile-use aerie with two vaulted dormer window alcoves

POWDER ROOM 2

- This convenient half-bath is appointed with original wide-plank flooring and pedestal sink

STUDY ALCOVE

- Thoughtfully equipped with office and media ports, this versatile-use bonus area enjoys garden views from an original dormer window

BEDROOMS 5, 6, AND 7

- Each of these well-sized bedrooms features mellowed, original wide-plank pine flooring, a closet, and a charming dormer window that has been artfully restored to reveal original arched or peaked architectural detail

BATHROOM 4 – "THE HERITAGE BATH"

- A page out of history, this bathroom features meticulously restored vintage bath appointments preserved from other areas of the home; the amenities include an original cast iron claw foot tub, a corner shower, two marble sinks with polished nickel legs, and period black and white basket-weave marble flooring

TRUNK ROOM

- This generous space houses accessible electrical/mechanical controls and provides storage for the traveling accoutrements of guests visiting for "the season"



LOWER LEVEL OF THE HOME

SCREENING ROOM

- Equipped with a sound-proof door and a state-of-the-art home theatre system, this magnificently appointed venue takes its cues from a late 19th century stage setting; raked theatre seating – complete with in-stair theatre lighting – provides unobstructed views from every seat in the house; the ceiling is crowned with an extraordinary elliptical dome with a mural of sky and clouds; stunning cobalt-blue carpeting with gold stars completes the plush amenities

POWDER ROOM 3

- The showpiece of this half-bath is underfoot, where imported cobalt-blue tiles reveal iridescent rainbows; the appointments include a pedestal sink

WINE CELLAR

- Entered through an arched doorway of mahogany with Rocky Mountain nickel hardware, this temperature-controlled tasting and storage room provides customized mahogany wine racks for 1,000+ bottles, additional storage, and room for wine tastings

ADDITIONAL DETAILS OTHER FEATURES OF THE HOME

- Grand staircase unites the main and second levels; a completely remodeled and repositioned rear staircase conveniently serves all four levels of the home
- Four wood-burning fireplaces with gas starters
- Windows are original or authentic period glass (or tempered as required by code)
- Large second-level laundry with a window overlooking garden views, utility sink, folding counter, and storage cabinetry; appliances include a Fisher Paykel washer and Fisher Paykel gas dryer
- Security system
- Built-in sound system with speakers in the living room, dining room, front and rear terraces, master suite, “library” bedroom suite, third-level game room, and lower-level screening room
- “Smart-home” wired and pre-wired for CAT5 and state-of-the-art entertainment media access
- Nine separate heating and air conditioning zones
- All new plumbing and electrical infrastructure
- New roof, copper gutters, and downspouts
- Extensive structural renovations and upgrades include seismically correct steel supports throughout, hidden within the existing historical architectural elements; voluntary seismic strengthening of the entire perimeter brick foundation, including concrete stem walls and associated bolting and blocking; and the widening and reconfiguring of the back staircase to serve all four levels and improve the home’s functionality and traffic circulation



OTHER FEATURES OF THE HOME - CONTINUED

- Completely new, detached 3-car garage built in a style sympathetic to the main residence; includes built-in hardwood shelving originally from the home's living room
- New spa and elegant lap pool with a retractable cover designed to mirror the beauty, order, and symmetry found inside the home; landscape lights in the trees cast shadows on the striking curved backdrop wall
- Exquisitely landscaped wrap-around grounds feature wisteria, venerable oaks, magnolias, canary palms, and other mature trees that offer seclusion; recent plantings reflect the standards of the early 1900s, and include a kitchen garden, and expanses of level lawn for play
- Menlo Park schools: Laurel (K-2), Encinal (3-5), Hillview (6-8), and Menlo-Atherton (9-12)
- Close to downtown Palo Alto and Menlo Park, and convenient to commute routes, greater Silicon Valley, and San Francisco

FOR MORE INFORMATION, PLEASE CONTACT:

SUSAN TILLING

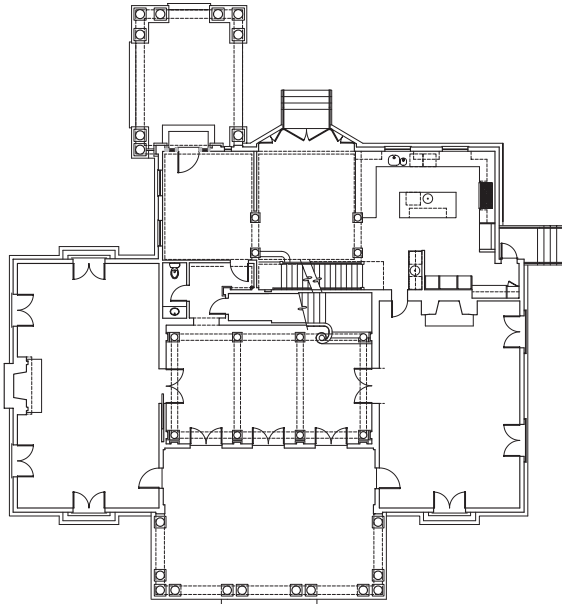
650.566.5313 DIRECT

650.324.4456 OFFICE

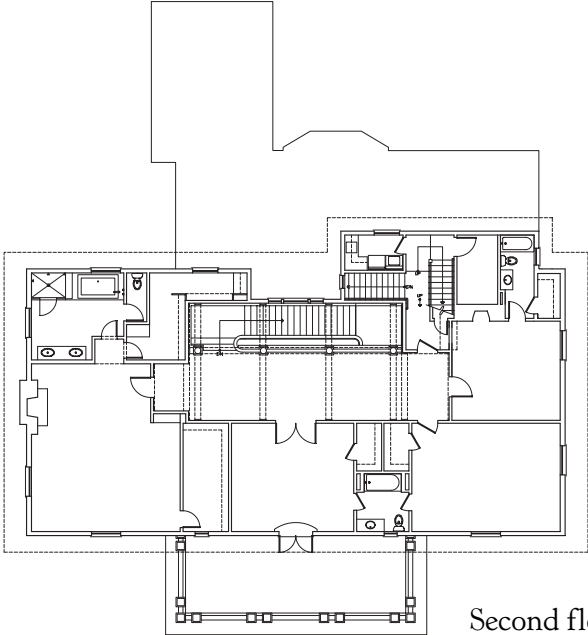
stilling@cbtnorcal.com



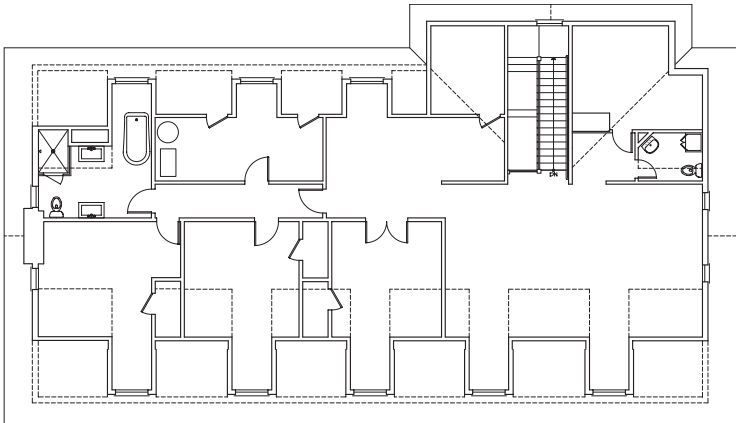
41 LOWERY DRIVE
A T H E R T O N



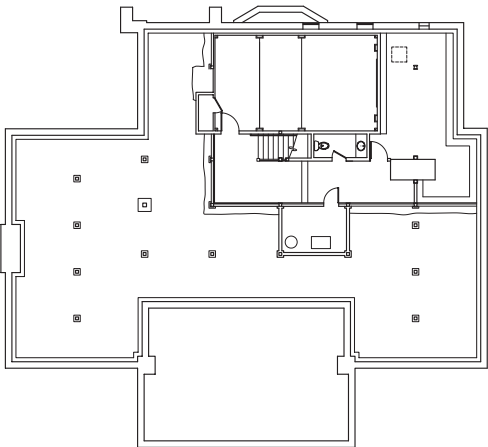
First floor



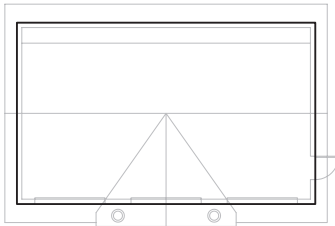
Second floor



Third floor



Basement



Garage

